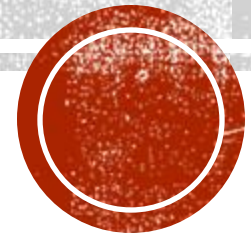


PLUMBING



MR. WISE

Professional:

- Plumbing for 5 years (commercial new construction)
- Millwright for 7 years (commercial/industrial)
- Plumbing Instructor for 8 years

Personal:

- Married with 2 sons
- Hobbies: Hunting, Fishing, Sports and Traveling



UNIFORMS

- How to order (school website lancasterctc.edu , scroll down, online store/uniforms)
- Recommended at least **3** complete outfits



CELL PHONE RULE

- No cell phones allowed except for lunch
- Cell phones go in organizer behind my desk can be picked up before lunch, and put back after lunch.



SAFETY REQUIREMENTS/RULES IN THE LAB

- Hard Hat
- Safety Glasses
- Safety Toe(Steel or Composite) Leather Boots
- No Jewelry(Earrings, Necklace, Etc.)
- MUST BE in Uniform (pants and shirt)
- Must be trained and approved by me to operate power tools



OVERVIEW OF PROGRAM

- Power/ hand tool safety and proper use
- General safety on the jobsite
- Reading blueprints for piping systems
- Identify different types valves
- Different methods for joining/connecting/installing plastic, copper, steel, and cast-iron pipe and fittings.
- Installing the various fixtures (sink, lavatories, showers, toilets, etc.).
- Installing gas/electric water heaters
- Components of a boiler



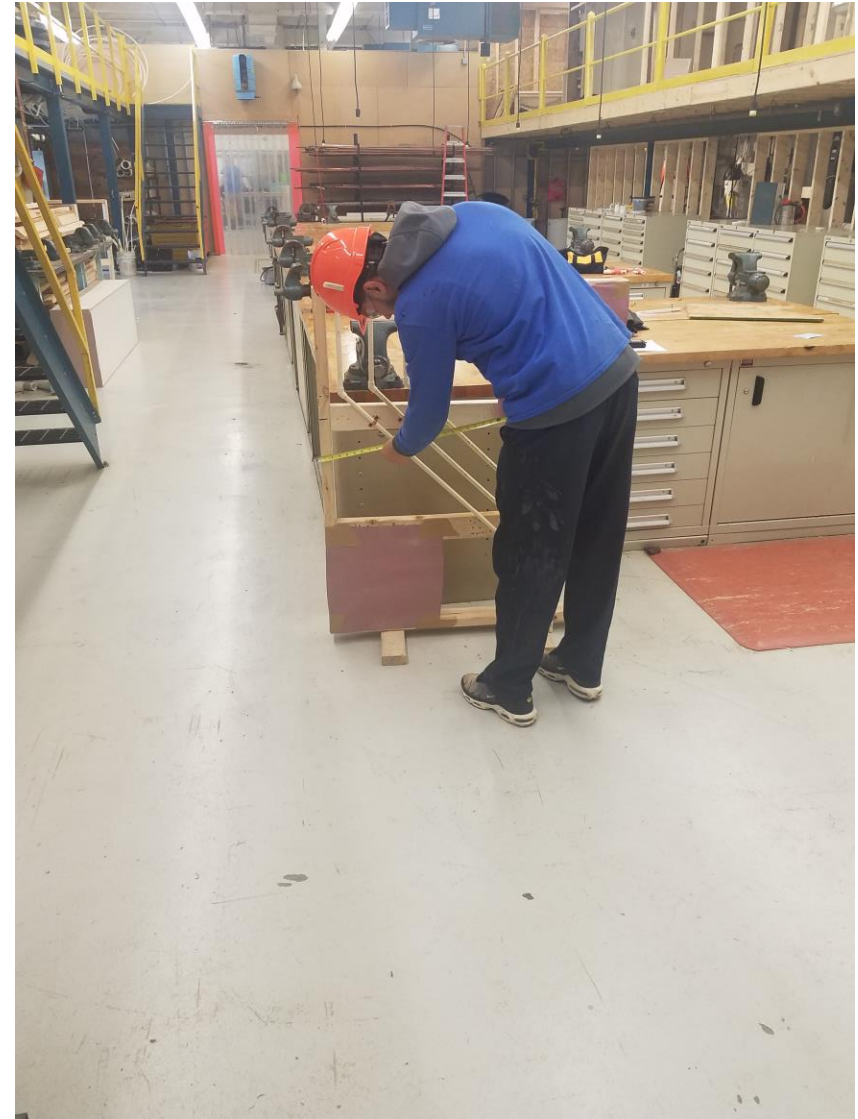
INDUSTRY CERTIFICATIONS

- 10-hour OSHA training
- Career Safe Employability Skills
- NOCTI Skills
- Gastite
- Tracpipe
- First-year apprentice through the ABC Keystone Chapter



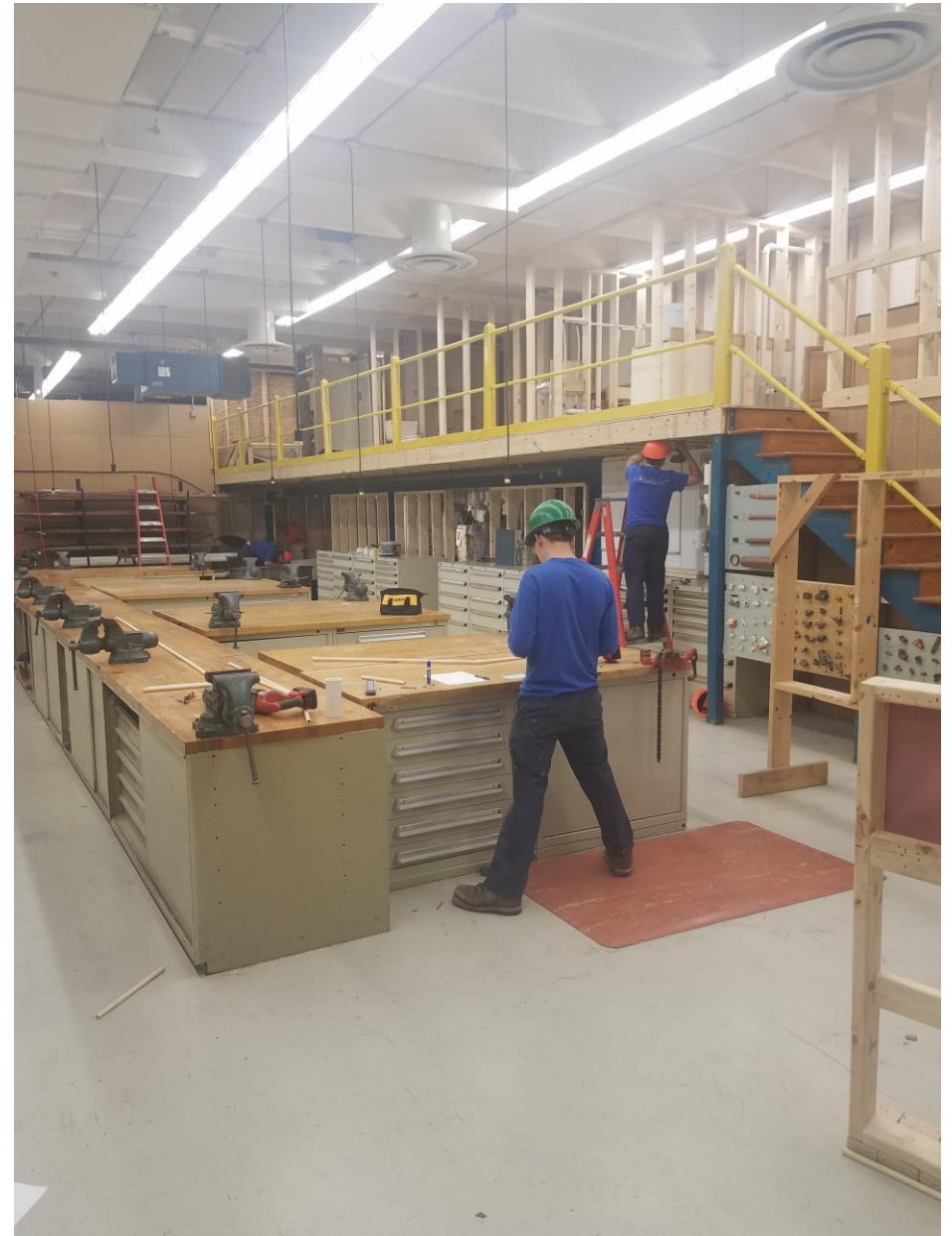
NORMAL CLASS DAY

- Students Arrive
- Work until morning announcements 8-8:45
- We have theory for about 40 mins to 1 ½ hours in the morning
- Hands on learning in the lab (completing the task list)
- Clean up shop/lab
- Dismissal



THEORY

- Homework weekly review questions/ trade terms
- Quizzes
- Tests
- Hands-on testing
- NOCTI Testing
- Resume building/Interview Skills



GRADING



- 33% Knowledge (Test/Quiz)
- 33% Skill (Hands-On Tasks)
- 33% Work Ethic (Daily Work Habits)
- ❖ Can view grades daily on Parent Portal



SUPPORT STAFF

- **IU 13 Staff for students with IEPs**
- **ESL staff**
- **Campus Counselor**



FIRST DAY REQUIREMENTS

- Safety Boots with safety toe
- Pencil and Sharpie marker
- Textbooks are given first day of school
- Cost of Program/Tuition for Adult Students
- Recommend(Not Required) Getting Drivers License for CO-OP



OTHER OPPORTUNITIES

- Use your skills learned in class to help complete the House Project
- CO-OP (80% Grade Average or Higher, Instructor Approval, 90% Attendance)
- Continue Education at Technical School
- Potential Job Opportunities after Graduation
- SkillsUSA
- NTHS (National Technical Honor Society)



COOP OPPORTUNITIES

Commercial Installer



Residential
Installer



Service
Technician



MORE COOP OPPORTUNITIES

Sprinkler Fitter/Installer



Pipe Welder



TRANSPORTATION

- Drivers(Buy a parking permit from the office) School Hours 8:00-2:35
- Non-Drivers(Ride the bus from your sending school district) Arrival and Departure times vary)



CARHARTT STORE

- Agreement with the Carhartt store at Park City Mall
- Students get a discount must show either CTC ID or acceptance letter.



QUESTIONS?



**Thanks For Coming
See You In the Fall**

