



LANCASTER COUNTY
CAREER & TECHNOLOGY CENTER

Annual Report

2017-2018

Table of Contents

MISSION STATEMENT.....	2
ABOUT Lancaster County Career & Technology Center.....	2-3
CAMPUS LOCATIONS.....	4
National Occupational Competency Testing Institute (NOCTI)	5
Brownstown 2018 NOCTI Scores	6
Mount Joy 2018 NOCTI Scores.....	7
Willow Street 2018 NOCTI Scores.....	8
School-Wide 2018 NOCTI Average Scores	9
ENROLLMENT DATA 2012-13 to 2017-18	10
2012-13 & 2013-14	10
2014-15 & 2015-16	11
2016-17 & 2017-18	12
6 Year Enrollment Graph.....	13
GRADUATE SURVEY RESULTS.....	14
2017-2018 Post-Graduation Plans	14
Mark Your Calendar	16
ADA/EOE/Nondiscrimination Information.....	17

MISSION STATEMENT

Prepare people for skilled, innovative and productive careers.

ABOUT Lancaster County CTC

Lancaster County CTC is one of the largest technical schools operating in the Commonwealth of Pennsylvania. The school features state-of-the-art training technology and first class training facilities. Our system is unique as a county-wide system because we operate from five separate campus locations under one administration with each campus offering specialty centers. All programs are approved by the PA Department of Education (PDE) and reflect the employment needs of the Greater Lancaster County Region. In addition, the Lancaster County CTC is accredited by the Commission of the Council on Occupational Education (COE). Lancaster County CTC offers specialized associate degrees.

At Lancaster County CTC, the focus is on education and support for our students. We work hard to keep our institution recognized as a valued community resource directed at all facets of career and workforce development. We provide a variety of educational opportunities and avenues open to secondary students and adults. We encourage participation in student organizations and offer educational and career counseling, placement and financial assistance. One area the school is particularly proud of is the creation of the Lancaster County Career and Technology Foundation. To date, the Foundation has generated over three million dollars in funds to support a variety of needs, programs and scholarships.

All programs at the Lancaster County CTC are structured and designed from the advice of business and industry advisory committees. Occupational Advisory Committees (OAC) identify the knowledge and skill levels necessary to be successful on the job. Our faculty uses this information to continually update the curriculum, equipment and software to enhance the employability and upward mobility of our graduates. Through our industry-driven curricula, students are challenged to reach their full potential and to be prepared for new and changing technologies. Lancaster County CTC faculty members are well qualified in their respective fields and are dedicated to quality instruction. The faculty and staff are committed to education as a lifelong learning process.

Graduate prepared for a
HIGH-skill
HIGH-wage
HIGH-demand
c a r e e r

99.9%
HIGH SCHOOL
Graduation Rate
*(2013-14)

©2017, Forbes Media LLC. Used with permission.

Forbes 2017
TOP 30
TRADE
SCHOOLS

Only CTC in PA
named to
Aspen Institute's
Top 150
US two-year colleges

Specialized Associate Degrees
Medical Assistant
Automotive Technology
Veterinary Technology

.....
Hands-on,
project-based
learning
.....

CAMPUS LOCATIONS



Brownstown Campus

Snyder & Metzler Roads
Brownstown, PA 17508
Ph: (717) 859-5100



Mount Joy Campus

432 Old Market Street
Mount Joy, PA 17552
Ph: (717) 653-3000



Willow Street Campus

1730 Hans Herr Drive
Willow Street, PA 17584
Ph: (717) 464-7050



Health Sciences Campus

422 Beaver Valley Pike
Willow Street, PA 17584
Ph: (717) 464-7063



Lancaster County Public Safety Training Center

101 Champ Blvd.
Manheim, PA 17545
Ph: (717) 537-4190

National Occupational Competency Testing Institute (NOCTI)

NOCTI is a leading provider of high-quality technical competency assessment products and services for secondary and post-secondary educational institutions in the United States and around the world.

NOCTI is the largest provider of industry-based credentials and partner industry certifications for career and technical education (CTE) programs across the nation. Whether using assessments to meet Perkins accountability requirements, to guide data-driven instructional improvement, or to assist with teacher evaluation systems, NOCTI provides a credible solution through its validated and reliable technical skill assessment.

NOCTI has worked closely with the National College Credit Recommendation Service (NCCRS) to evaluate the rigor of the NOCTI credentials, and translate the content into college credit equivalencies.

As a result, all NOCTI Job Ready and Pathway multiple-choice assessments are eligible for college credit recommendations. Credits range from one to six credits per assessment. NOCTI has also collaborated with Excelsior College to offer students the option to obtain an official college transcript.



Students meeting a 70% benchmark on a NOCTI multiple-choice credential are eligible to receive the College Credit Recommendation Report. This report is automatically generated as part of the NOCTI score report package. Not only can this report be a valuable component of a student's portfolio, it can also be presented at any of the 1500+ cooperating colleges and universities for college credit consideration.

Lancaster County CTC conducts the NOCTI pre-test in the beginning of December with the final assessment occurring in the spring. The test scores on the following pages are broken out by campus:

Brownstown Campus	2017						2018					
NOCTI RESULTS	Total Tested	Basic	Competent	Advanced	Advanced Percentage	Competent or above Percentage	Total Tested	Basic	Competent	Advanced	Advanced Percentage	Competent or above Percentage
Architectural CAD	18	0	1	17	94.4%	100.0%	23	0	3	20	87.0%	100.0%
Architectural CAD -PS												
Cabinet Making	15	3	7	5	33.3%	80.0%	16	0	9	7	43.8%	100.0%
Cabinet Making - PS												
Commercial Art	21	3	1	17	81.0%	85.7%	19	0	2	17	89.5%	100.0%
Computer Systems	25	1	4	20	80.0%	96.0%	24	3	6	15	62.5%	87.5%
Computer Systems -PS												
Electrical	21	4	1	16	76.2%	81.0%	20	0	1	19	95.0%	100.0%
Electrical - PS	1			1	100.0%	100.0%	2	0	0	2	100.0%	100.0%
Graphics	20	0	9	11	55.0%	100.0%	17	0	1	16	94.1%	100.0%
Heavy Equipment	19	1	6	12	63.2%	94.7%	18	0	4	14	77.8%	100.0%
Heavy Equipment - PS												
HVAC	20	0	7	13	65.0%	100.0%	21	0	6	15	71.4%	100.0%
HVAC - PS	2			2	100.0%	100.0%						
Painting	14	0	1	13	92.9%	100.0%	18	0	0	18	100.0%	100.0%
Plumbing	12	5	5	2	16.7%	58.3%	16	7	5	4	25.0%	56.3%
Plumbing - PS	2	1		1	50.0%	50.0%	1		1		0.0%	100.0%
School Average	190	18	42	130	68%	90.53%	195	10	38	147	75%	94.87%
Secondary	185	17	42	126	68%	90.81%	192	10	37	145	76%	94.79%
Post-Secondary	5	1		4	80%	80.0%	3	0	1	2	67%	100.0%

Willow Street	2017							2018						
NOCTI RESULTS	Total Tested	Below Basic	Basic	Competent	Advanced	PSC Percentage	Percentage Passing	Total Tested	Basic	Competent	Advanced	PSC Percentage	Percentage Passing	
	Auto Mechanics	45	1	0	5	39	87%	98%	44	5	6	33	75%	89%
	Auto Technology	20	0	0	1	19	95%	100%	20	0	1	19	95%	100%
	Patient Care Technician	21	5	0	5	11	52%	76%	23	4	9	10	43%	83%
	Collision Repair	24	2	1	7	14	58%	88%	18	1	6	11	61%	94%
	Cosmetology	38	4	0	9	25	66%	89%	34	4	2	28	82%	88%
	Diesel Tech.	24	2	1	5	16	67%	88%	23	7	4	12	52%	70%
	Dental Asst.	21	0	0	0	21	100%	100%	15	0	3	12	80%	100%
	Dental Asst. (PS)	11	0	0	0	11	100%	100%	7	0	1	6	86%	100%
	Medical Asst.	24	1	0	6	17	71%	96%	21	0	4	17	81%	100%
	Medical Asst. (PS)								9	0	1	8	89%	100%
	Nursing Asst.	42	1	0	18	23	55%	98%	42	5	10	27	64%	88%
	RV/OPE	20	3	0	9	8	40%	85%	19	3	3	13	68%	84%
	Vet Assistant								48	2	14	32	67%	96%
	School Average	290	19	2	65	204	70%	93%	323	31	64	228	71%	90%
	Secondary Average	279	19	2	65	193	69%	92%	259	29	48	182	70%	89%
	Post Secondary Average	0	0	0	0	0	0%	0%	16	0	2	14	88%	100%

POST SECONDARY =(PS)

SCHOOL-WIDE 2018 NOCTI RESULT AVERAGES

	Total Tested	Basic	Competent	Advanced	Advanced Percentage	Competent or above Percentage
BT Campus Average	195	10	38	147	75%	95%
Secondary	192	10	37	145	76%	95%
Post-Secondary	3	0	1	2	67%	100%
MJ Campus Average	263	23	73	167	63%	91%
Secondary	260	23	73	164	63%	91%
Post-Secondary	3	0	0	3	100%	100%
WS Campus Average	323	31	64	228	71%	90%
Secondary	259	29	48	182	70%	89%
Post-Secondary	16	0	2	14	88%	100%
School-Wide Average	781	64	175	542	69%	92%
Secondary	711	62	158	491	69%	91%
Post-Secondary	22	0	3	19	86%	100%

ENROLLMENT DATA
PERCENT OF HIGH SCHOOL SENIORS ATTENDING LCCTC
October 1, 2012 through October 1, 2017

2012-2013	9th	10th	11th	12th	Total HS	CTC-12	% of HS grade 12
Cocalico	283	292	238	264	1077	53	20.076%
Columbia	83	89	104	60	336	21	35.000%
Conestoga Valley	342	344	343	341	1370	72	21.114%
Donegal	236	204	200	213	853	36	16.901%
E. Lanc. Co.	273	240	252	273	1038	90	32.967%
Elizabethtown	304	309	281	315	1209	74	23.492%
Ephrata	327	301	346	302	1276	52	17.219%
Hempfield	585	516	534	582	2217	60	10.309%
Lampeter-Strasburg	273	250	274	266	1063	36	13.534%
Lancaster SD	874	822	734	619	3049	56	9.047%
Manheim Central	245	254	259	235	993	39	16.596%
Manheim Township	497	454	472	420	1843	36	8.571%
Penn Manor	426	440	459	406	1731	100	24.631%
Pequea Valley	154	150	147	159	610	48	30.189%
Solanco	315	320	267	274	1176	79	28.832%
Warwick	362	390	362	389	1503	60	15.424%
GRAND	5579	5375	5272	5118	21344	912	17.819%
2013-2014	9th	10th	11th	12th	Total HS	CTC-12	% of HS grade 12
Cocalico	254	284	275	224	1037	56	25.000%
Columbia	92	74	76	97	339	27	27.835%
Conestoga Valley	364	338	329	359	1390	65	18.106%
Donegal	235	241	203	191	870	36	18.848%
E. Lanc. Co.	302	253	232	262	1049	65	24.809%
Elizabethtown	328	312	281	279	1200	67	24.014%
Ephrata	321	336	303	342	1302	75	21.930%
Hempfield	599	570	517	532	2218	51	9.586%
Lampeter-Strasburg	255	270	249	302	1076	47	15.563%
Lancaster SD	894	774	722	567	2957	59	10.406%
Manheim Central	245	258	253	264	1020	57	21.591%
Manheim Township	490	562	581	557	2190	34	6.104%
Penn Manor	467	431	444	441	1783	115	26.077%
Pequea Valley	136	148	145	110	539	42	38.182%
Solanco	329	298	325	284	1236	96	33.803%
Warwick	346	361	381	363	1451	56	15.427%
GRAND	5657	5510	5316	5174	21657	948	18.322%

ENROLLMENT DATA
PERCENT OF HIGH SCHOOL SENIORS ATTENDING LCCTC
October 1, 2012 through October 1, 2017

2014-2015	9th	10th	11th	12th	Total HS	CTC-12	% of HS grade 12
Cocalico	279	255	282	269	1085	57	21.190%
Columbia	136	100	90	101	427	23	22.772%
Conestoga Valley	345	371	324	336	1376	83	24.702%
Donegal	253	246	238	205	942	34	16.585%
E. Lanc. Co.	310	281	262	228	1081	65	28.509%
Elizabethtown	359	322	310	294	1285	51	17.347%
Ephrata	328	323	332	292	1275	61	20.890%
Hempfield	606	616	642	621	2485	58	9.340%
Lampeter-Strasburg	284	244	264	261	1053	20	7.663%
Lancaster SD	943	867	763	602	3175	48	7.973%
Manheim Central	258	268	255	275	1056	43	15.636%
Manheim Township	491	470	481	421	1863	28	6.651%
Penn Manor	438	477	454	445	1814	95	21.348%
Pequea Valley	143	141	146	114	544	41	35.965%
Solanco	356	309	274	286	1225	74	25.874%
Warwick	376	345	359	384	1464	55	14.323%
GRAND	5905	5635	5476	5134	22150	836	16.284%
2015-2016	9th	10th	11th	12th	Total HS	CTC-12	% of HS grade 12
Cocalico	263	278	248	259	1048	57	22.008%
Columbia	116	104	76	65	361	23	35.385%
Conestoga Valley	346	338	356	323	1363	83	25.697%
Donegal	244	225	226	218	913	34	15.596%
E. Lanc. Co.	302	240	240	257	1039	65	25.292%
Elizabethtown	306	322	290	290	1208	51	17.586%
Ephrata	318	310	301	316	1245	61	19.304%
Hempfield	584	548	554	533	2219	58	10.882%
Lampeter-Strasburg	262	272	228	233	995	20	8.584%
Lancaster SD	263	276	231	259	1029	48	18.533%
Manheim Central	252	238	235	230	955	43	18.696%
Manheim Township	432	472	417	429	1750	28	6.527%
Penn Manor	418	406	462	419	1705	95	22.673%
Pequea Valley	134	141	130	135	540	41	30.370%
Solanco	255	306	318	284	1163	74	26.056%
Warwick	326	353	357	337	1373	55	16.320%
GRAND	4821	4829	4669	4587	18906	836	18.225%

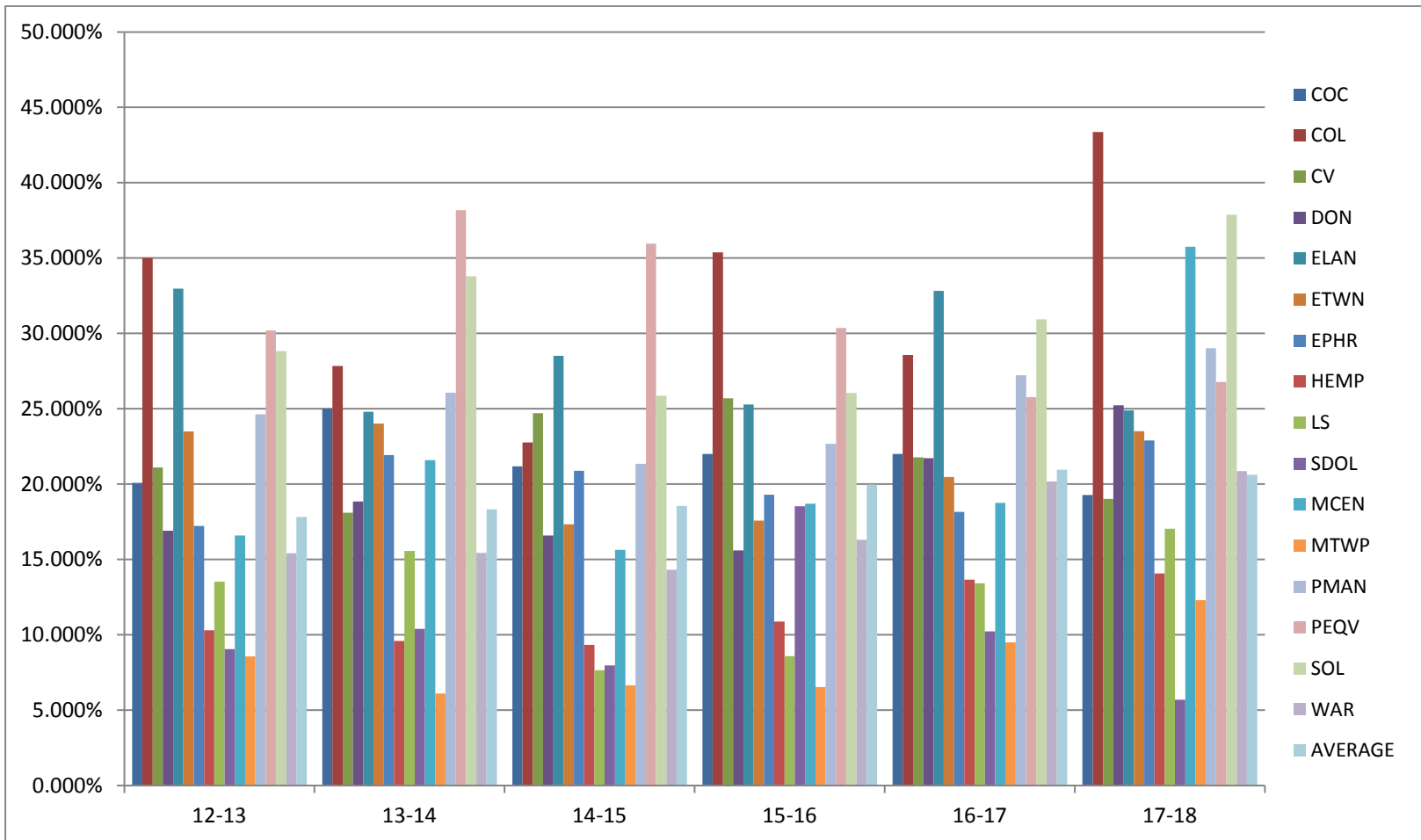
ENROLLMENT DATA
PERCENT OF HIGH SCHOOL SENIORS ATTENDING LCCTC
October 1, 2012 through October 1, 2017

2016-2017	9th	10th	11th	12th	Total HS	CTC-12	% of HS grade 12
Cocalico	210	266	272	250	998	55	22.000%
Columbia	129	96	96	70	391	20	28.571%
Conestoga Valley	350	350	330	358	1388	78	21.788%
Donegal	239	242	227	221	929	48	21.719%
E. Lanc. Co.	265	276	242	198	981	65	32.828%
Elizabethtown	322	296	304	293	1215	60	20.478%
Ephrata	323	317	299	314	1253	57	18.153%
Hempfield	557	566	539	556	2218	76	13.669%
Lampeter-Strasburg	262	267	261	231	1021	31	13.420%
Lancaster SD	814	850	748	636	3048	65	10.220%
Manheim Central	268	254	235	240	997	45	18.750%
Manheim Township	461	438	454	400	1753	38	9.500%
Penn Manor	381	433	425	481	1720	131	27.235%
Pequea Valley	133	123	140	128	524	33	25.781%
Solanco	273	298	311	278	1160	86	30.935%
Warwick	330	356	354	342	1382	69	20.175%
GRAND	5317	5428	5237	4996	20978	957	19.155%
2017-2018	9th	10th	11th	12th	Total HS	CTC-12	% of HS grade 12
Cocalico	247	207	269	275	998	53	19.273%
Columbia	124	99	86	83	392	36	43.373%
Conestoga Valley	334	337	356	305	1332	58	19.016%
Donegal	225	242	239	214	920	54	25.234%
E. Lanc. Co.	283	253	249	257	1042	64	24.903%
Elizabethtown	322	314	288	302	1226	71	23.510%
Ephrata	338	318	296	297	1249	68	22.896%
Hempfield	536	546	561	526	2169	74	14.068%
Lampeter-Strasburg	273	251	255	264	1043	45	17.045%
Lancaster SD	778	667	691	597	2733	34	5.695%
Manheim Central	236	269	247	193	945	69	35.751%
Manheim Township	474	442	394	447	1757	55	12.304%
Penn Manor	400	369	439	417	1625	121	29.017%
Pequea Valley	129	123	115	127	494	34	26.772%
Solanco	278	258	261	293	1090	111	37.884%
Warwick	367	329	344	345	1385	72	20.870%
GRAND	5344	5024	5090	4942	20400	1019	20.619%

ENROLLMENT DATA

Percent of High School Seniors Attending LCCTC

2012-2013 to 2017-18



2017-18 Post-Graduation Plans

For the 2017-18 school year, 923 secondary & adult students in full day and senior only programs completed the survey. Of the 923 who responded, 646 (70%) responded yes to being employed. Of those 357 employed and not attending college or military, 130 (36%) reported being employed in their field. 182 students (20%) reported not yet employed with no current plans to attend post-secondary education or military service. *This information is collected in May, prior to the time some of our students are able to obtain employment due to not yet having the certifications and high school diploma required for those positions.

Of the 923 senior and adult graduates who filled out the survey, 327 (35%) responded yes to attending post-secondary education after our programs. Most of the respondents had a school chosen (303), with the remainder not yet decided.

The majority of our 2017-18 college bound students will attend:

HACC- Harrisburg Area Community College	91	YTI Career Institute	13
Thaddeus Stevens College of Technology	47	UTI- Universal Technical Institute	11
LCCTC Post-Secondary	17	Millersville University	9

An alphabetical list of all colleges/programs is below:

ABC	7	Immaculata University	1
Academy for Media Production	3	Indiana University of Pennsylvania	5
Albright College	1	Johnson & Wales University	1
Alvernia University	2	Kutztown University	2
Automotive Training Center	2	Lancaster Bible College	2
Berks Technical Institute	1	LCCTC Post-Secondary	17
Bloomsburg University	3	Lancaster School of Cosmetology	3
California University of Pennsylvania	1	Lebanon Valley College	1
Cecil County Community College	1	Lock Haven	2
Cedar Crest	1	Marywood University	1
Coastal Carolina University	2	Millersville University	9
Culinary Institute of America	1	Montgomery Community College	1
Cutting Edge Barbering School	1	Moore College of Art & Design	1
Delaware County Community College	2	Nova Southeastern University	1
East Carolina University	1	PA College of Art & Design	3
Eastern University	1	Penn Foster	6
Full Sail University	2	Penn State University	6
George T Baker Aviation Technical College	1	Pennsylvania College of Health Sciences	8
HACC- Harrisburg Area Community College	91	Pennsylvania College of Technology	6
Hesston College	1	Reading Hospital School of Health Sciences	1
Hiram G Andrews Center	1	Shenandoah University	1
Hood College	1	Sinclair Community College	1

2017-18 Post-Graduation Plans

State Fair Community College	1	Washington University	1
Susquehanna University	1	West Chester University	1
Thaddeus Stevens College of Technology	47	West Virginia University	1
The Travel Academy	1	Widener University	3
UTI- Universal Technical Institute	11	Wilkes University	1
University of Northwestern Ohio	5	Wilson College	3
University of Pittsburgh	3	Yavapai College	1
University of South Carolina	1	York College of PA	2
Vet Institute of Harrisburg	1	YTI Career Institute	13

Of the 923 senior and adult graduates who filled out the survey, 54 (6%) responded yes to joining the military after our programs. Most of the respondents had a branch chosen (52), with the remainder not yet decided or no answer given.

Air Force	4	Marines	15
Army	23	National Guard	2
Coast Guard	2	Navy	6

Mark Your Calendar

2018 JOC MEETING SCHEDULE

Day	Date	Time	Location
Thursday	January 25, 2018	7:00 PM	Brownstown
Thursday	February 22, 2018	7:00 PM	Willow Street
Thursday	March 22, 2018	7:00 PM	Mount Joy
Thursday	April 26, 2018	7:00 PM	Brownstown
Thursday	May 24, 2018	7:00 PM	Willow Street
Thursday	June 28, 2018	7:00 PM	Mount Joy
	NO MEETING JULY		
Thursday	August 23, 2018	7:00 PM	Brownstown
Thursday	September 27, 2018	7:00 PM	Mount Joy
Thursday	October 25, 2018	7:00 PM	Health Science
	NO MEETING NOV.		
Monday	December 10, 2018	7:00 PM	Willow Street

ADA/EOE/Nondiscrimination Information:

The Lancaster County Career & Technology Center does not discriminate on the basis of race, color, national origin, sex, disability or age in its programs or activities. This policy of nondiscrimination extends to all other legally protected classifications under state and federal laws.

For information regarding the American with Disabilities Act (ADA), the rights of an individual with a disability, our obligations under ADA, or grievance procedures, contact the Business Manager and ADA Coordinator, 1730 Hans Herr Drive, PO Box 527, Willow Street, PA 17584-0527. Telephone: (717) 464-7060.

For inquiries regarding other nondiscriminatory policies, programs or for information regarding services, activities, programs and facilities that are accessible to and usable by both disabled persons and national origin minority persons who lack English language skills, contact the Supervisor of Student Services and Coordinator for Title VI, IX and Section 504, 1730 Hans Herr Drive, PO Box 527, Willow Street, PA 17584-0527. Telephone: (717) 208-3124.

Lancaster County CTC is accredited by: The commission of the Council on Occupational Education, 7840 Roswell Road, Building 300, Suite 325, Atlanta, GA 30350. Telephone: (800) 917-2081. Website: www.council.org.

For program descriptions, lengths, schedules, school calendar and grading procedures; admissions and transfer requirements; tuition, fees and refunds policy; financial aid information; prerequisite and completion information; graduation rates; rules and regulations for conduct; grievance procedures; legal requirements for licensure (if applicable); requirements for entry into or advancement within an occupation; median debt of students who completed the program; and other important information, please visit our website at www.lancasterctc.edu.

A complete listing of full-time or part-time faculty members, including degrees held and the conferring institution is available for review upon written request in the Executive Director's office at the Willow Street Campus of the Lancaster County CTC.