



LANCASTER COUNTY
CAREER & TECHNOLOGY CENTER

Annual Report

2016-2017

Table of Contents

MISSION STATEMENT	2
ABOUT Lancaster County Career & Technology Center	2-3
CAMPUS LOCATIONS	4
National Occupational Competency Testing Institute (NOCTI)	5
Brownstown 2017 NOCTI Scores	6
Mount Joy 2017 NOCTI Scores.....	7
Willow Street 2017 NOCTI Scores.....	8
School-Wide 2017 NOCTI Average Scores	9
ENROLLMENT DATA 2010-11 to 2016-17	10
2010-11 & 2011-12	10
2012-13 & 2013-14	11
2014-15 & 2015-16	12
2016-17.....	13
7 Year Enrollment Graph.....	14
SURVEY RESULTS	15
2016-2017 Post-Graduation Plans	15
Mark Your Calendar	17
ADA/EOE/Nondiscrimination Information	18

MISSION STATEMENT

Prepare people for skilled, innovative and productive careers.

ABOUT Lancaster County CTC

Lancaster County CTC is one of the largest technical schools operating in the Commonwealth of Pennsylvania. The school features state-of-the-art training technology and first class training facilities. Our system is unique as a county-wide system because we operate from five separate campus locations under one administration with each campus offering specialty centers. All programs are approved by the PA Department of Education (PDE) and reflect the employment needs of the Greater Lancaster County Region. In addition, the Lancaster County CTC is accredited by the Commission of the Council on Occupational Education (COE). Lancaster County CTC offers specialized associate degrees.

At Lancaster County CTC, the focus is on education and support for our students. We work hard to keep our institution recognized as a valued community resource directed at all facets of career and workforce development. We provide a variety of educational opportunities and avenues open to secondary students and adults. We encourage participation in student organizations and offer educational and career counseling, placement and financial assistance. One area the school is particularly proud of is the creation of the Lancaster County Career and Technology Foundation. To date, the Foundation has generated over three million dollars in funds to support a variety of needs, programs and scholarships.

All programs at the Lancaster County CTC are structured and designed from the advice of business and industry advisory committees. Occupational Advisory Committees (OAC) identify the knowledge and skill levels necessary to be successful on the job. Our faculty uses this information to continually update the curriculum, equipment and software to enhance the employability and upward mobility of our graduates. Through our industry-driven curricula, students are challenged to reach their full potential and to be prepared for new and changing technologies. Lancaster County CTC faculty members are well qualified in their respective fields and are dedicated to quality instruction. The faculty and staff are committed to education as a lifelong learning process.

Graduate prepared for a

HIGH-skill

HIGH-wage

HIGH-demand

c a r e e r

99.9%
HIGH SCHOOL
Graduation Rate
*(2013-14)

©2017, Forbes Media LLC. Used with permission.

Forbes **2017**
TOP 30
TRADE
SCHOOLS

Only CTC in PA
named to

Aspen Institute's

Top 150

US two-year colleges

Specialized Associate Degrees

Medical Assistant

Automotive Technology

Veterinary Technology



.....
Hands-on,
 project-based
learning

CAMPUS LOCATIONS



Brownstown Campus

Snyder & Metzler Roads
Brownstown, PA 17508
Ph: (717) 859-5100



Mount Joy Campus

432 Old Market Street
Mount Joy, PA 17552
Ph: (717) 653-3000



Willow Street Campus

1730 Hans Herr Drive
Willow Street, PA 17584
Ph: (717) 464-7050



Health Sciences Campus

422 Beaver Valley Pike
Willow Street, PA 17584
Ph: (717) 464-7063



Lancaster County Public Safety Training Center

101 Champ Blvd.
Manheim, PA 17545
Ph: (717) 537-4190

National Occupational Competency Testing Institute (NOCTI)

NOCTI is a leading provider of high-quality technical competency assessment products and services for secondary and post-secondary educational institutions in the United States and around the world.

NOCTI is the largest provider of industry-based credentials and partner industry certifications for career and technical education (CTE) programs across the nation. Whether using assessments to meet Perkins accountability requirements, to guide data-driven instructional improvement, or to assist with teacher evaluation systems, NOCTI provides a credible solution through its validated and reliable technical skill assessment.

NOCTI has worked closely with the National College Credit Recommendation Service (NCCRS) to evaluate the rigor of the NOCTI credentials, and translate the content into college credit equivalencies.

As a result, all NOCTI Job Ready and Pathway multiple-choice assessments are eligible for college credit recommendations. Credits range from one to six credits per assessment. NOCTI has also collaborated with Excelsior College to offer students the option to obtain an official college transcript.



Students meeting a 70% benchmark on a NOCTI multiple-choice credential are eligible to receive the College Credit Recommendation Report. This report is automatically generated as part of the NOCTI score report package. Not only can this report be a valuable component of a student's portfolio, it can also be presented at any of the 1500+ cooperating colleges and universities for college credit consideration.

Lancaster County CTC conducts the NOCTI pre-test in the beginning of December with the final assessment occurring in the spring. The test scores on the following pages are broken out by campus:

Brownstown Campus	2016 - All Students						2016 - IEP Students						2017 - All Students						2017 - IEP Students						
	Total Tested	Basic	Competent	Advanced	Advanced Percentage	Competent or above Percentage	Total IEP Tested	IEP - Basic	IEP - Competent	IEP - Advanced	IEP - Advanced Percentage	IEP- Competent or above Percentage	Total Tested	Basic	Competent	Advanced	Advanced Percentage	Competent or above Percentage	Total IEP Tested	IEP - Basic	IEP - Competent	IEP - Advanced	IEP - Advanced Percentage	IEP- Competent or above Percentage	
NOCTI Results with IEP Student Breakdown																									
Architectural CAD	14	0	3	11	78.6%	100.0%	5	0	3	2	40.00%	100.00%	18	0	1	17	94.4%	100.0%	4	0	1	3	75.00%	100.00%	
Cabinet Making	9	1	3	5	55.6%	88.9%	2	1	1	0	0.00%	50.00%	15	3	7	5	33.3%	80.0%	6	1	1	4	66.67%	83.33%	
Commercial Art	18	0	2	16	89.0%	100.0%	5	0	1	4	80.00%	100.00%	21	3	1	17	81.0%	85.7%	11	3	1	7	63.64%	72.73%	
Computer Systems	23	7	2	14	60.9%	69.6%	8	3	1	4	50.00%	62.50%	25	1	4	20	80.0%	96.0%	7	1	1	5	71.43%	85.71%	
Electrical	20	2	5	13	65.0%	90.0%	9	2	4	3	33.33%	77.78%	21	4	1	16	76.2%	81.0%	9	4	1	4	44.44%	55.56%	
Graphics	11	0	0	11	100.0%	100.0%	4	0	0	4	100.00%	100.00%	20	0	9	11	55.0%	100.0%	8	0	6	2	25.00%	100.00%	
Heavy Equipment	18	0	7	11	61.1%	100.0%	4	0	1	3	75.00%	100.00%	19	1	6	12	63.2%	94.7%	6	0	1	5	83.33%	100.00%	
HVAC	11	1	4	6	54.5%	90.9%	2	0	2	0	0.00%	100.00%	20	0	7	13	65.0%	100.0%	5	0	2	3	60.00%	100.00%	
Painting	11	0	0	11	100.0%	100.0%	9	0	0	9	100.00%	100.00%	14	0	1	13	92.9%	100.0%	9	0	1	8	88.89%	100.00%	
Plumbing	15	3	2	10	66.7%	80.0%	5	3	0	2	40.00%	40.00%	12	5	5	2	16.7%	58.3%	4	1	3	0	0.00%	75.00%	
School Average	161	14	28	119	74%	91%	53	9	13	31	58.49%	83.02%	190	18	42	130	68.0%	90.5%	69	10	18	41	59.42%	85.51%	
Secondary	150	14	28	108	72%	91%							185	17	42	126	68%	90.81%							
Post-Secondary	11	0	0	11	100%	100%							5	1	0	4	80%	80.0%							

Mount Joy Campus	2016 - All Students						2016 - IEP Students					2017 - All Students						2017 - IEP Students						
	Total Tested	Basic	Competent	Advanced	Advanced Percentage	Competent or above Percentage	Total IEP Tested	IEP - Basic	IEP - Competent	IEP -Advanced	IEP - Advanced Percentage	IEP- Competent or above Percentage	Total Tested	Basic	Competent	Advanced	Advanced Percentage	Competent or above Percentage	Total IEP Tested	IEP - Basic	IEP - Competent	IEP -Advanced	IEP - Advanced Percentage	IEP- Competent or above Percentage
Baking & Pastry Arts	16	0	2	14	88%	100.00%	5	0	1	4	80.00%	100.00%	16	1	3	12	75%	93.75%	6	1	3	2	33%	83.33%
Baking & Pastry Arts - PS							0						0	0	0	0	#DIV/0!	#DIV/0!	0					
Commercial Constr	15	2	1	12	80%	86.67%	4	1	0	3	75.00%	75.00%	14	2	2	10	71%	85.71%	5	1	2	2	40%	80.00%
Commercial Constr - PS							0						1	0	0	1	100%	100.00%	0					
Cosmetology	20	0	0	20	100%	100.00%	3	0	0	3	100.00%	100.00%	23	1	3	19	83%	95.65%	3	0	0	3	100%	100.00%
Cosmetology - PS							0						0	0	0	0	#DIV/0!	#DIV/0!	0					
Culinary Arts	31	6	5	20	65%	80.65%	14	4	1	9	64.29%	71.43%	31	2	1	28	90%	93.55%	13	2	1	10	77%	84.62%
Culinary Arts - PS							0						0	0	0	0	#DIV/0!	#DIV/0!	0					
Early Childhood Ed.	28	0	7	21	75%	100.00%	7	0	3	4	57.14%	100.00%	27	2	5	20	74%	92.59%	12	2	4	6	50%	83.33%
Early Childhood Ed. - PS							0						1	0	0	1	100%	100.00%	0					
Electromechanical Eng.	13	5	8	0	0%	61.54%	2	1	1	0	0.00%	50.00%	18	9	8	1	6%	50.00%	2	2	0	0	0%	0.00%
Electromechanical Eng. - PS	3	2	1	0	0%	33.33%	0						2	0	1	1	50%	100.00%	0					
Protective Services	55	14	30	11	20%	74.55%	14	6	7	1	7.14%	57.14%	57	2	14	41	72%	96.49%	10	0	5	5	50%	100.00%
Protective Services - PS							0						0	0	0	0	#DIV/0!	#DIV/0!	0					
Residential Carpentry	18	0	1	17	94%	100.00%	5	0	1	4	80.00%	100.00%	22	1	2	19	86%	95.45%	8	1	2	5	63%	87.50%
Residential Carpentry - PS	1	0	0	1	100%	100.00%	0						0	0	0	0	#DIV/0!	#DIV/0!	0					
Event Planning	16	1	4	11	69%	93.75%	8	1	3	4	50.00%	87.50%	17	1	4	12	71%	94.12%	7	1	3	3	43%	85.71%
Event Planning - PS	2	0	0	2	100%	100.00%	0						1	0	1	0	0%	100.00%	0					
Welding	24	4	3	17	71%	83.33%	14	4	3	7	50.00%	71.43%	40	6	3	31	78%	85.00%	12	5	1	6	50%	58.33%
Welding - PS							0						0	0	0	0	#DIV/0!	#DIV/0!	0					
School Average	242	34	62	146	60%	85.95%	76	17	20	39	51.32%	77.63%	270	27	47	196	73%	90.00%	78	15	21	42	54%	80.77%
Secondary	236	32	61	143	61%	86.44%							265	27	45	193	73%	89.81%						
Post Secondary	6	2	1	3	50%	66.67%							5	0	2	3	60%	100.00%						

Willow Street	2016							2016 - IEP Students							2017							2017 - IEP Students						
	Total Tested	Below Basic	Basic	Competent	Advanced	PSC Percentage	Percentage Passing	Total IEP Tested	IEP - Basic	IEP - Competent	IEP - Advanced	IEP - Advanced Percentage	IEP - Competent or above Percentage	Total Tested	Below Basic	Basic	Competent	Advanced	PSC Percentage	Percentage Passing	Total IEP Tested	IEP - Basic	IEP - Competent	IEP - Advanced	IEP - Advanced Percentage	IEP - Competent or above Percentage		
NOCTI Results with IEP Student Breakdown																												
Auto Mechanics	48	0	0	12	36	75%	100%	16	0	5	11	68.75%	100.00%	45	1	0	5	39	87%	98%	12	1	3	8	66.67%	91.67%		
Auto Mechanics (PS)																												
Auto Technology	20	0	0	2	18	90%	100%	6	0	2	4	66.67%	100.00%	20	0	0	1	19	95%	100%	3	0	0	3	100.00%	100.00%		
Clinical Care Asst.	24	19	0	5	0	0%	21%	1	1	0	0	0.00%	0.00%	21	5	0	5	11	52%	76%	4	2	2	0	0.00%	50.00%		
Collision Repair	23	1	0	8	14	61%	96%	10	1	5	4	40.00%	90.00%	24	2	1	7	14	58%	88%	9	2	3	4	44.44%	77.78%		
Collision Repair (PS)	1				1	100%	100%																					
Cosmetology	34	0	0	3	31	91%	100%	4	0	1	3	75.00%	100.00%	38	4	0	9	25	66%	89%	11	3	3	5	45.45%	72.73%		
Diesel Tech.	26	2	0	12	12	46%	92%	5	2	3	0	0.00%	60.00%	24	2	1	5	16	67%	88%	6	2	1	3	50.00%	66.67%		
Diesel Tech. (PS)																												
Dental Asst.	18	0	0	1	17	94%	100%	1			1	100.00%	100.00%	21	0	0	0	21	100%	100%	2	0	0	2	100.00%	100.00%		
Dental Asst. (PS)	9	0	0	0	9	100%	100%							11	0	0	0	11	100%	100%								
Heavy Equipment																												
Medical Asst. A	22	0	0	3	19	86%	100%	4	0	1	3	75.00%	100.00%	24	1	0	6	17	71%	96%	3	0	3	0	0.00%	100.00%		
Medical Asst. B																												
Medical Asst. (PS)	10	0	0	1	9	90%	100%							3	0	0	0	3	100%	100%								
Nursing Asst.	39	0	1	12	26	67%	97%	7	0	5	2	28.57%	100.00%	42	1	0	18	23	55%	98%	6	1	4	1	16.67%	83.33%		
RV/OPE	19	0	0	3	16	84%	100%	8	0	3	5	62.50%	100.00%	20	3	0	9	8	40%	85%	13	3	5	5	38.46%	76.92%		
RV/OPE (PS)														1	0	0	0	1	100%	100%								
School Average	293	22	1	62	208	71%	92%							294	19	2	65	208	71%	93%								
Secondary Average	273	22	1	61	189	69%	92%	62	4	25	33	53.23%	93.55%	279	19	2	65	193	69%	92%	69	14	24	31	44.93%	79.71%		
Post Secondary Average	20	0	0	1	19	95%	100%							14	0	0	0	14	100%	100%								
POST SECONDARY =(PS)																												

SCHOOL-WIDE 2017 NOCTI RESULT AVERAGES

	Total Tested	Basic	Competent	Advanced	Advanced Percentage	Competent or above Percentage
BT Campus Average	190	18	42	130	68%	91%
Secondary	185	17	42	126	68%	91%
Post-Secondary	5	1	0	4	80%	80%
MJ Campus Average	270	27	47	196	73%	90%
Secondary	265	27	45	193	73%	89%
Post-Secondary	5	0	2	3	60%	100%
WS Campus Average	294	2	65	208	71%	94%
Secondary	279	2	65	193	69%	92%
Post-Secondary	14	0	0	14	100%	100%
School-Wide Average	754	47	154	534	71%	91%
Secondary	729	46	152	512	70%	91%
Post-Secondary	24	1	2	21	88%	96%

ENROLLMENT DATA
 PERCENT OF HIGH SCHOOL SENIORS ATTENDING LCCTC
 October 1, 2010 through October 1, 2016

2010-2011	9th	10th	11th	12th	Total HS	CTC-12	% of HS grade 12
Cocalico	248	294	269	237	1048	61	25.738%
Columbia	123	85	96	82	386	25	30.488%
Conestoga Valley	350	335	314	240	1239	75	31.250%
Donegal	213	228	204	173	818	39	22.543%
E. Lanc. Co.	288	275	279	191	1033	78	40.838%
Elizabethtown	308	326	340	360	1334	84	23.333%
Ephrata	357	312	329	291	1289	64	21.993%
Hempfield	546	562	591	561	2260	75	13.369%
Lampeter-Strasburg	297	266	266	265	1094	39	14.717%
Lancaster SD	847	739	682	515	2783	64	12.427%
Manheim Central	254	244	246	206	950	58	28.155%
Manheim Township	469	448	481	429	1827	33	7.692%
Penn Manor	440	404	476	361	1681	91	25.208%
Pequea Valley	150	160	155	161	626	46	28.571%
Solanco	312	300	288	288	1188	79	27.431%
Warwick	386	398	364	330	1478	42	12.727%
GRAND	5588	5376	5380	4690	21034	953	20.320%
2011-2012	9th	10th	11th	12th	Total HS	CTC-12	% of HS grade 12
Cocalico	286	238	279	227	1030	48	21.145%
Columbia	100	111	75	53	339	34	64.151%
Conestoga Valley	355	357	338	328	1378	51	15.549%
Donegal	207	206	216	181	810	41	22.652%
E. Lanc. Co.	240	274	251	231	996	71	30.736%
Elizabethtown	295	318	323	318	1254	81	25.472%
Ephrata	311	343	315	326	1295	54	16.564%
Hempfield	540	529	555	576	2200	65	11.285%
Lampeter-Strasburg	260	290	255	242	1047	33	13.636%
Lancaster SD	792	698	634	554	2678	43	7.762%
Manheim Central	248	251	226	177	902	58	32.768%
Manheim Township	449	497	430	472	1848	35	7.415%
Penn Manor	440	440	401	356	1637	116	32.584%
Pequea Valley	153	150	157	159	619	42	26.415%
Solanco	344	282	268	232	1126	47	20.259%
Warwick	390	374	373	329	1466	30	9.119%
GRAND	5410	5358	5096	4761	20625	849	17.832%

ENROLLMENT DATA
 PERCENT OF HIGH SCHOOL SENIORS ATTENDING LCCTC
 October 1, 2010 through October 1, 2016

2012-2013	9th	10th	11th	12th	Total HS	CTC-12	% of HS grade 12
Cocalico	283	292	239	204	1018	53	25.980%
Columbia	87	91	109	44	331	21	47.727%
Conestoga Valley	340	342	344	339	1365	72	21.239%
Donegal	237	206	197	186	826	36	19.355%
E. Lanc. Co.	274	242	250	203	969	90	44.335%
Elizabethtown	313	314	288	315	1230	74	23.492%
Ephrata	319	305	345	302	1271	52	17.219%
Hempfield	575	510	518	557	2160	60	10.772%
Lampeter-Strasburg	269	248	275	263	1055	36	13.688%
Lancaster SD	771	711	621	554	2657	56	10.108%
Manheim Central	243	249	248	189	929	39	20.635%
Manheim Township	495	452	463	414	1824	36	8.696%
Penn Manor	417	429	444	298	1588	100	33.557%
Pequea Valley	152	150	147	159	608	48	30.189%
Solanco	315	320	262	202	1099	79	39.109%
Warwick	358	390	359	331	1438	60	18.127%
GRAND	5448	5251	5109	4560	20368	912	20.000%
2013-2014	9th	10th	11th	12th	Total HS	CTC-12	% of HS grade 12
Cocalico	254	283	274	170	981	56	32.941%
Columbia	96	75	82	94	347	27	28.723%
Conestoga Valley	364	336	327	358	1385	65	18.156%
Donegal	235	241	203	156	835	36	23.077%
E. Lanc. Co.	300	253	230	203	986	65	32.020%
Elizabethtown	327	311	278	279	1195	67	24.014%
Ephrata	312	333	288	339	1272	75	22.124%
Hempfield	593	569	515	522	2199	51	9.770%
Lampeter-Strasburg	248	258	242	291	1039	47	16.151%
Lancaster SD	779	668	582	513	2542	59	11.501%
Manheim Central	231	248	242	194	915	57	29.381%
Manheim Township	463	484	407	424	1778	34	8.019%
Penn Manor	467	430	439	326	1662	115	35.276%
Pequea Valley	136	148	145	110	539	42	38.182%
Solanco	312	282	298	165	1057	96	58.182%
Warwick	345	360	379	310	1394	56	18.065%
GRAND	5462	5279	4931	4454	20126	948	21.284%

ENROLLMENT DATA
 PERCENT OF HIGH SCHOOL SENIORS ATTENDING LCCTC
 October 1, 2010 through October 1, 2016

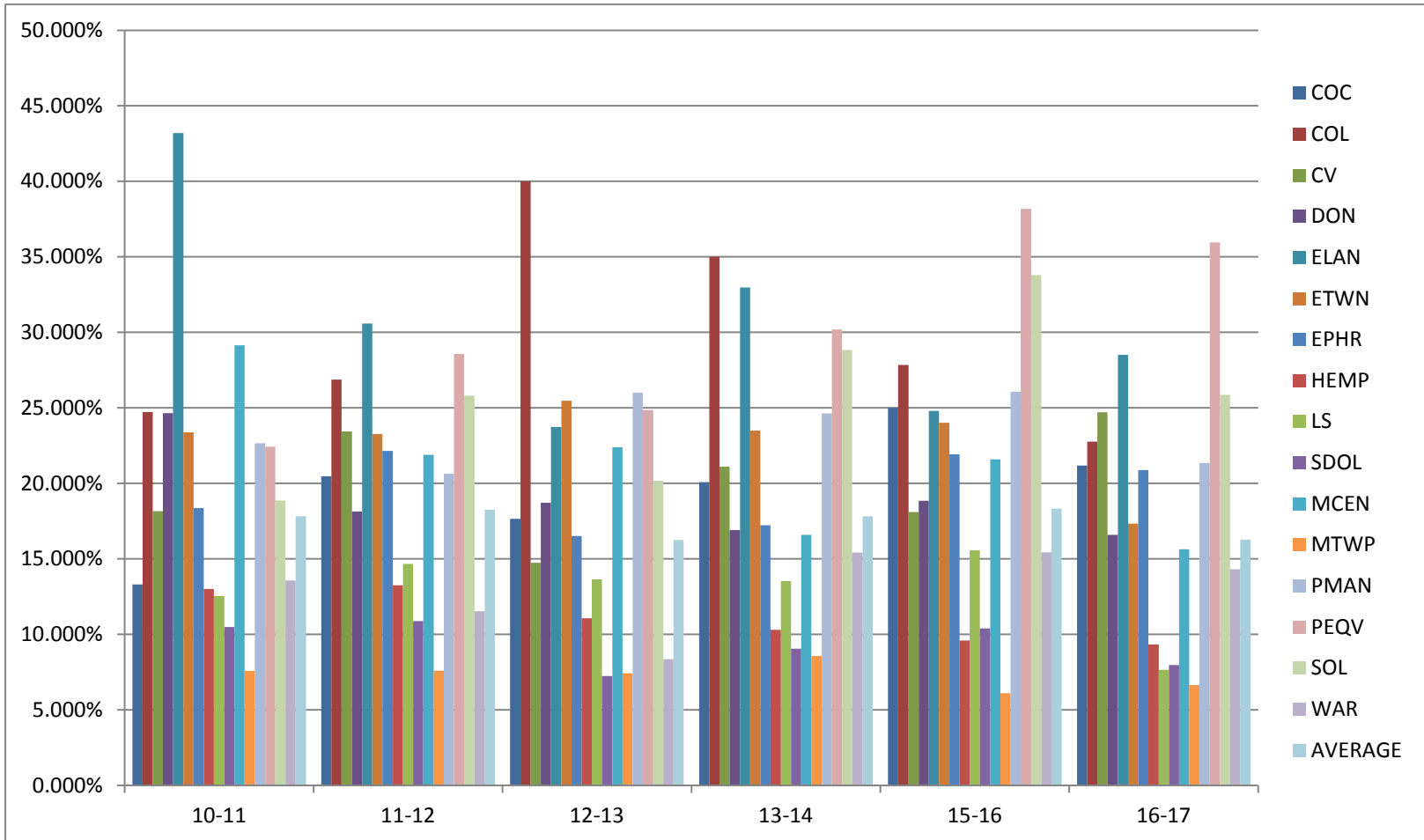
2014-2015	9th	10th	11th	12th	Total HS	CTC-12	% of HS grade 12
Cocalico	270	251	272	209	1002	57	27.273%
Columbia	122	80	76	78	356	23	29.487%
Conestoga Valley	343	363	328	334	1368	83	24.850%
Donegal	241	231	229	153	854	34	22.222%
E. Lanc. Co.	299	268	247	172	986	65	37.791%
Elizabethtown	347	313	297	274	1231	51	18.613%
Ephrata	318	316	328	277	1239	61	22.022%
Hempfield	564	560	558	520	2202	58	11.154%
Lampeter-Strasburg	277	235	247	250	1009	20	8.000%
Lancaster SD	800	744	598	494	2636	48	9.717%
Manheim Central	231	237	241	198	907	43	21.717%
Manheim Township	473	453	457	372	1755	28	7.527%
Penn Manor	425	463	431	338	1657	95	28.107%
Pequea Valley	134	137	136	105	512	41	39.048%
Solanco	346	297	260	203	1106	74	36.453%
Warwick	366	335	347	321	1369	55	17.134%
GRAND	5556	5283	5052	4298	20189	836	19.451%
2015-2016	9th	10th	11th	12th	Total HS	CTC-12	% of HS grade 12
Cocalico	260	279	251	213	1003	57	26.761%
Columbia	116	104	76	65	361	23	35.385%
Conestoga Valley	351	338	360	330	1379	83	25.152%
Donegal	251	228	232	167	878	34	20.359%
E. Lanc. Co.	310	247	259	179	995	65	36.313%
Elizabethtown	327	329	299	286	1241	51	17.832%
Ephrata	321	308	308	319	1256	61	19.122%
Hempfield	596	549	554	557	2256	58	10.413%
Lampeter-Strasburg	277	269	219	250	1015	20	8.000%
Lancaster SD	783	694	659	511	2647	48	9.393%
Manheim Central	246	236	234	173	889	43	24.855%
Manheim Township	450	482	422	398	1752	28	7.035%
Penn Manor	414	414	464	335	1627	95	28.358%
Pequea Valley	132	141	127	104	504	41	39.423%
Solanco	301	319	277	179	1076	74	41.341%
Warwick	355	365	328	303	1351	55	18.152%
GRAND	5490	5302	5069	4369	20230	836	19.135%

ENROLLMENT DATA
 PERCENT OF HIGH SCHOOL SENIORS ATTENDING LCCTC
 October 1, 2010 through October 1, 2016

2016-2017	9th	10th	11th	12th	Total HS	CTC-12	% of HS grade 12
Cocalico	210	266	272	250	998	55	22.000%
Columbia	129	96	96	70	391	20	28.571%
Conestoga Valley	350	350	328	356	1384	78	21.910%
Donegal	239	242	227	221	929	48	21.719%
E. Lanc. Co.	259	276	242	198	975	65	32.828%
Elizabethtown	322	296	304	293	1215	60	20.478%
Ephrata	323	317	299	314	1253	57	18.153%
Hempfield	556	566	539	556	2217	76	13.669%
Lampeter-Strasburg	262	266	258	230	1016	31	13.478%
Lancaster SD	732	747	646	591	2716	65	10.998%
Manheim Central	264	254	235	196	949	45	22.959%
Manheim Township	457	438	451	397	1743	38	9.572%
Penn Manor	379	433	425	476	1713	131	27.521%
Pequea Valley	133	123	140	126	522	33	26.190%
Solanco	273	298	311	278	1160	86	30.935%
Warwick	329	356	354	342	1381	69	20.175%
GRAND	5217	5324	5127	4894	20562	957	19.555%

ENROLLMENT DATA
Percent of High School Seniors Attending LCCTC
2010-11 to 2016-17

14



2016-17 Post-Graduation Plans

LCCTC had 963 program completers (secondary & adult students in full day and senior only programs) in the 2016-17 school year. Of the 940 senior and adult graduates who filled out the survey, 595 (63%) responded yes to being employed. Of those 320 employed and not attending college or military, 148 (46%) reported being employed in their field. 226 students (24%) reported not yet employed with no current plans to attend post-secondary education or military service. *This information is collected in May, prior to the time some of our students are able to obtain employment due to not yet having the certifications and high school diploma required for those positions.

Of the 940 senior and adult graduates who filled out the survey, 343 (36%) responded yes to attending post-secondary education after our programs. Most of the respondents had a school chosen (319), with the remainder not yet decided.

The majority of our 2016-17 college bound students will attend:

HACC	78	LCCTC Post-Secondary	16
Thaddeus Stevens	45	Millersville University	14
Pennsylvania College of Health Sciences	22	YTI	13

An alphabetical list of all colleges/programs is below:

ABC	4	Harrisburg University of Science & Technology	1
Albright College	1	Hiram G Andrews	2
Alvernia University	3	Indiana University of Pennsylvania	6
Antonelli	4	Johnson & Wales University	1
AOFM NYC	1	Kinsley University	1
Arizona State	1	Kutztown University	2
Automotive Training Center	3	LCCTC Post-Secondary	16
Beacon College	1	Lancaster School of Massage	1
Bradford School	1	Lebanon Valley College	1
Cecil County Community College	1	Liberty University	1
Central Penn College	3	Lock Haven	1
Champs Barber School	1	Messiah College	1
CIA- Culinary Institute of America	3	Millersville University	14
Coastal Carolina University	1	Montclair State University	1
Colorado State University	1	Moore College of Art & Design	1
Cutting Edge Barbering School	1	Mount Aloysius College	1
Duke	1	New York Film Academy	1
East Stroudsburg University	1	Oklahoma State University	1
Elizabethtown	1	PA College of Art & Design	9
Full Sail University	2	Penn College	3
HACC	78	Penn State University	3
Harcum	4		

2016-17 School Graduate Survey Results

Pennsylvania College of Health Sciences	22	UTI- Universal Technical Institute	4
Pennsylvania College of Technology	8	University of Phoenix	1
Philadelphia University	1	Vet Tech Institute	1
Pitt	2	Weber State University	1
Pittsburg Technical Institute	1	Widener University	3
RAAC	1	Wilkes University	1
Regent University	1	Wilson College	3
School of Cosmetology	1	WyoTech	1
Shippensburg University	1	York College of PA	5
Temple University	3	YTI	13
Thaddeus Stevens	45	YWAM	1

Of the 940 senior and adult graduates who filled out the survey, 56 (6%) responded yes to joining the military after our programs. Most of the respondents had a branch chosen (49), with the remainder not yet decided or no answer given.

Air Force	5	Marines	13
Army	15	National Guard	8
Coast Guard	1	Navy	7

Mark Your Calendar

2017 JOC MEETING SCHEDULE

Day	Date	Time	Location
Thursday	January 26, 2017	7:00 PM	Brownstown
Thursday	February 23, 2017	7:00 PM	Willow Street
Thursday	March 23, 2017	7:00 PM	Mount Joy
Thursday	April 27, 2017	7:00 PM	Brownstown
Thursday	May 25, 2017	7:00 PM	Willow Street
Thursday	June 22, 2017	7:00 PM	Mount Joy
	NO MEETING JULY		
Thursday	August 24, 2017	7:00 PM	Brownstown
Thursday	September 28, 2017	7:00 PM	Mount Joy
Thursday	October 26, 2017	7:00 PM	Health Science
	NO MEETING NOV.		
Monday	December 11, 2017	7:00 PM	Willow Street

ADA/EOE/Nondiscrimination Information:

The Lancaster County Career & Technology Center does not discriminate on the basis of race, color, national origin, sex, disability or age in its programs or activities. This policy of nondiscrimination extends to all other legally protected classifications under state and federal laws.

For information regarding the American with Disabilities Act (ADA), the rights of an individual with a disability, our obligations under ADA, or grievance procedures, contact the Business Manager and ADA Coordinator, 1730 Hans Herr Drive, PO Box 527, Willow Street, PA 17584-0527. Telephone: (717) 464-7060.

For inquiries regarding other nondiscriminatory policies, programs or for information regarding services, activities, programs and facilities that are accessible to and usable by both disabled persons and national origin minority persons who lack English language skills, contact the Supervisor of Student Services and Coordinator for Title VI, IX and Section 504, 1730 Hans Herr Drive, PO Box 527, Willow Street, PA 17584-0527. Telephone: (717) 208-3124.

Lancaster County CTC is accredited by: The commission of the Council on Occupational Education, 7840 Roswell Road, Building 300, Suite 325, Atlanta, GA 30350. Telephone: (800) 917-2081. Website: www.council.org.

For program descriptions, lengths, schedules, school calendar and grading procedures; admissions and transfer requirements; tuition, fees and refunds policy; financial aid information; prerequisite and completion information; graduation rates; rules and regulations for conduct; grievance procedures; legal requirements for licensure (if applicable); requirements for entry into or advancement within an occupation; median debt of students who completed the program; and other important information, please visit our website at www.lancasterctc.edu.

A complete listing of full-time or part-time faculty members, including degrees held and the conferring institution is available for review upon written request in the Executive Director's office at the Main Campus of the Lancaster County CTC.