



LANCASTER COUNTY

CAREER & TECHNOLOGY CENTER

Annual Report

2014-2015

Table of Contents

MISSION STATEMENT	3
ABOUT Lancaster County Career & Technology Center	3
CAMPUS LOCATIONS	4
National Occupational Competency Testing Institute (NOCTI)	5
Brownstown 2015 NOCTI Scores	6
Mount Joy 2015 NOCTI Scores.....	7
Willow Street 2015 NOCTI Scores.....	8
School-Wide 2013-2015 NOCTI Average Scores.....	9
ENROLLMENT DATA 2009-10 to 2014-15	10
2009-10 & 2010-11	10
2011-12 & 2012-13	11
2013-14 & 2014-15	12
6 Year Enrollment Graph.....	13
OCCUPATIONAL STATUS OF GRADUATES 2014-15	14
Mark Your Calendar	15
ADA/EOE/Nondiscrimination Information	16

MISSION STATEMENT

Prepare people for skilled, innovative and productive careers.

ABOUT Lancaster County CTC

Lancaster County CTC is one of the largest technical schools operating in the Commonwealth of Pennsylvania. The school features state-of-the-art training technology and first class training facilities. Our system is unique as a county-wide system because we operate from five separate campus locations under one administration with each campus offering specialty centers. All programs are approved by the PA Department of Education (PDE) and reflect the employment needs of the Greater Lancaster County Region. In addition, the Lancaster County CTC is accredited by the Commission of the Council on Occupational Education (COE). Lancaster County CTC offers specialized associate degrees. We are the only CTC in the state approved to offer degrees.

At Lancaster County CTC, the focus is on education and support for our students. We work hard to keep our institution recognized as a valued community resource directed at all facets of career and workforce development. We provide a variety of educational opportunities and avenues open to secondary students and adults. We encourage participation in student organizations and offer educational and career counseling, placement and financial assistance. One area the school is particularly proud of is the creation of the Lancaster County Career and Technology Foundation. To date, the Foundation has generated over three million dollars in funds to support a variety of needs, programs and scholarships.

All programs at the Lancaster County CTC are structured and designed from the advice of business and industry advisory committees. Occupational Advisory Committees (OAC) identify the knowledge and skill levels necessary to be successful on the job. Our faculty uses this information to continually update the curriculum, equipment and software to enhance the employability and upward mobility of our graduates. Through our industry-driven curricula, students are challenged to reach their full potential and to be prepared for new and changing technologies. Lancaster County CTC faculty members are well qualified in their respective fields and are dedicated to quality instruction. The faculty and staff are committed to education as a lifelong learning process.

CAMPUS LOCATIONS



Brownstown Campus

Snyder & Metzler Roads
Brownstown, PA 17508
Ph: (717) 859-5100



Mount Joy Campus

432 Old Market Street
Mount Joy, PA 17552
Ph: (717) 653-3000



Willow Street Campus

1730 Hans Herr Drive
Willow Street, PA 17584
Ph: (717) 464-7050



Health Sciences Campus

422 Beaver Valley Pike
Willow Street, PA 17584
Ph: (717) 464-7063



Lancaster County Public Safety Training Center

101 Champ Blvd.
Manheim, PA 17545
Ph: (717) 537-4190

National Occupational Competency Testing Institute (NOCTI)

NOCTI is a leading provider of high-quality technical competency assessment products and services for secondary and post-secondary educational institutions in the United States and around the world.

NOCTI is the largest provider of industry-based credentials and partner industry certifications for career and technical education (CTE) programs across the nation. Whether using assessments to meet Perkins accountability requirements, to guide data-driven instructional improvement, or to assist with teacher evaluation systems, NOCTI provides a credible solution through its validated and reliable technical skill assessment.

NOCTI has worked closely with the National College Credit Recommendation Service (NCCRS) to evaluate the rigor of the NOCTI credentials, and translate the content into college credit equivalencies.

As a result, all NOCTI Job Ready and Pathway multiple-choice assessments are eligible for college credit recommendations. Credits range from one to six credits per assessment. NOCTI has also collaborated with Excelsior College to offer students the option to obtain an official college transcript.



Students meeting a 70% benchmark on a NOCTI multiple-choice credential are eligible to receive the College Credit Recommendation Report. This report is automatically generated as part of the NOCTI score report package. Not only can this report be a valuable component of a student's portfolio, it can also be presented at any of the 1500+ cooperating colleges and universities for college credit consideration.

Lancaster County CTC conducts the NOCTI pre-test in the beginning of December with the final assessment occurring in the spring. The test scores on the following pages are broken out by campus:

Brownstown Campus	2013						2014 - All Students						2014 - IEP Students						2015 - All Students						2015 - IEP Students										
	Total Tested	Below Basic	Basic	Competent	Advanced	Advanced Percentage	Competent or above Percentage	Total Tested	Basic	Competent	Advanced	Advanced Percentage	Competent or above Percentage	Total IEP Tested	IEP - Basic	IEP - Competent	IEP - Advanced	Advanced Percentage	Competent or above Percentage	Total Tested	Basic	Competent	Advanced	Advanced Percentage	Competent or above Percentage	Total IEP Tested	IEP - Basic	IEP - Competent	IEP - Advanced	Advanced Percentage	Competent or above Percentage				
NOCTI Results with IEP Student Breakdown																																			
Architectural CAD	11	0	0	0	11	100.0%	100.0%	13		1	12	92.31%	100.00%	2			2	100.00%	100.00%	11				11	100.00%	100.00%	2			2	100.00%	100.00%			
Architectural CAD -PS	3	0	0	0	3	100.0%	100.0%													17	4	2	11	64.71%	76.47%	7	3	1	3	42.86%	57.14%				
Cabinet Making																				1		1		0.00%	100.00%										
Cabinet Making - PS																				21	7	14		66.67%	100.00%	6		2	4	66.67%	100.00%				
Commercial Art	19	0	0	0	19	100.0%	100.0%	23	1	5	17	73.91%	95.65%	7		4	3	42.86%	100.00%	21		7	14	66.67%	100.00%	6		2	4	66.67%	100.00%				
Commercial Art - PS																																			
Commercial Const.	14	0	0	1	13	93.0%	100.0%	20	0	2	18	90.00%	100.00%	6		2	4	66.67%	100.00%																
Commercial Const. - PS	1	0	0	0	1	100.0%	100.0%																												
Computer Systems								23	3	4	16	69.57%	86.96%	8	2	2	4	50.00%	75.00%	20	2	18		90.00%	100.00%	5		1	4	80.00%	100.00%				
Computer Systems -PS								1	1			0.00%	100.00%							1		1		100.00%	100.00%										
Electrical	16	0	0	1	15	94.0%	100.0%	17	1	3	13	76.47%	94.12%	5		2	3	60.00%	100.00%	17	3	2	12	70.59%	82.35%	6	3		3	50.00%	50.00%				
Electrical - PS								1	0	0	1	100.00%	100.00%							1		1		100.00%	100.00%										
Graphics	14	0	0	2	12	86.0%	100.0%	19	0	4	15	78.95%	100.00%	9		4	5	55.56%	100.00%	15		15		100.00%	100.00%	10		10		100.00%	100.00%				
Heavy Equipment								20	2	14	4	20.00%	90.00%	4	1	3		0.00%	75.00%	19	5	14		73.68%	100.00%	9		4	5	55.56%	100.00%				
Heavy Equipment - PS								3	1	1	1	33.33%	66.67%																						
HVAC	8		1	0	7	88.0%	87.5%	21	0	2	19	90.48%	100.00%	3			3	100.00%	100.00%	17	5	12		70.59%	100.00%	3		1	2	66.67%	100.00%				
HVAC - PS	2	0	0	0	2	100.0%	100.0%													3	1	2		66.67%	100.00%										
Masonry	18	0	1	2	15	83.0%	94.4%	17	0	5	12	70.59%	100.00%	8		2	6	75.00%	100.00%																
Painting	10	0	0	2	8	80.0%	100.0%	10	0	0	10	100.00%	100.00%	6		6	100.00%	100.00%	15	2	13		86.67%	100.00%	12		2	10	83.33%	100.00%					
Plumbing	19	0	0	0	19	100.0%	100.0%	15	0	0	15	100.00%	100.00%	5		5	100.00%	100.00%	19	1	18		94.74%	100.00%	8		1	7	87.50%	100.00%					
Plumbing - PS	4	0	0	0	4	100.0%	100.0%	2	0	0	2	100.00%	100.00%							3		3		100.00%	100.00%										
School Average	139	0	2	8	129		98.56%	205	8	42	155	75.61%	96.10%	63	3	19	41	65.08%	95.24%	180	7	28	145	80.56%	96.11%	68	6	12	50	73.53%	91.18%				
Secondary	129	0	2	8	119		98.45%	198	7	42	149	75.25%	96.46%							156	7	21	128	82.05%	95.51%										
Post-Secondary	10	0	0	0	10		100.0%	7	1	2	4	57.14%	85.71%							4		1	3	75.00%	100.00%										

Mount Joy Campus	2013						2014 - All Students						2014 - IEP Students						2015 - All Students						2015 - IEP Students					
	Total Tested	Basic	Competent	Advanced	Advanced Percentage	Competent or above Percentage	Total Tested	Basic	Competent	Advanced	Advanced Percentage	Competent or above Percentage	Total IEP Tested	IEP - Basic	IEP - Competent	IEP - Advanced	IEP - Advanced Percentage	IEP - Competent or above Percentage	Total Tested	Basic	Competent	Advanced	Advanced Percentage	Competent or above Percentage	Total IEP Tested	IEP - Basic	IEP - Competent	IEP - Advanced	IEP - Advanced Percentage	IEP - Competent or above Percentage
Baking & Pastry Arts	19	5	2	12	63%	73.7%	19	5	2	12	63.2%	73.7%	7	4	1	2	28.57%	42.86%	17	1	3	13	76%	94.12%	4	0	2	2	50.00%	100.00%
Baking & Pastry Arts - PS													0												0					
Commercial Constr	14	0	1	13	93.0%	100.0%	20	0	2	18	90.0%	100.0%	6	0	2	4	66.67%	100.00%	13	1	0	12	92%	92.31%	4	1	0	3	75.00%	75.00%
Commercial Constr - PS													0												0					
Cosmetology	23	2	4	17	74%	91.3%	24	0	9	15	62.5%	100.0%	6	0	3	3	50.00%	100.00%	19	0	2	17	89%	100.00%	3	0	1	2	66.67%	100.00%
Cosmetology - PS													0												0					
Culinary Arts	44	4	7	33	75%	90.9%	48	12	12	24	50.0%	75.0%	22	7	7	8	36.36%	68.18%	44	4	4	36	82%	90.91%	14	3	1	10	71.43%	78.57%
Culinary Arts - PS													0												0					
Early Childhood Ed.	20	1	4	15	75%	95.0%	40	4	14	22	55.0%	90.0%	15	2	7	6	40.00%	86.67%	38	1	8	29	76%	97.37%	8	0	2	6	75.00%	100.00%
Early Childhood Ed. - PS													0												0					
Protective Services	11	0	5	6	55%	100.0%	57	1	12	44	77.2%	98.2%	10	1	5	4	40.00%	90.00%	52	3	3	46	88%	94.23%	6	2	0	4	66.67%	66.67%
Protective Services - PS													0												0					
Residential Carpentry	17	5	4	8	47%	70.6%	23	0	3	20	87.0%	100.0%	9	0	2	7	77.78%	100.00%	19	1	1	17	89%	94.74%	5	0	0	5	100.00%	100.00%
Residential Carpentry - PS													0												0					
Event Planning	15	1	4	10	67%	93.3%	15	0	8	7	46.7%	100.0%	2	0	2	0	0.00%	100.00%	10	1	0	9	90%	90.00%	3	1	0	2	66.67%	66.67%
Event Planning - PS													0												0					
Welding	28	7	8	13	46%	75.0%	24	1	3	20	83.3%	95.8%	3	1	1	1	33.33%	66.67%	22	0	3	19	86%	100.00%	9	0	2	7	77.78%	100.00%
Welding - PS													0												0					
School Average	191	25	39	127	66%	86.9%	270	23	65	182	67.4%	91.5%	80	15	30	35	43.75%	81.25%	234	12	24	198	85%	94.87%	56	7	8	41	73.21%	87.50%

Willow Street Campus	2013								2014								2014 - IEP Students				2015								2015 - IEP Students				
NOCTI Results with IEP Student Breakdown	Total Tested	Below Basic	Basic	Competent	Advanced	PSC Percentage	Percentage Passing	Total Tested	Below Basic	Basic	Competent	Advanced	PSC Percentage	Percentage Passing	Total IEP Tested	IEP - Basic	IEP - Competent	IEP -Advanced	IEP - Advanced Percentage	IEP- Competent or above Percentage	Total Tested	Below Basic	Basic	Competent	Advanced	PSC Percentage	Percentage Passing	Total IEP Tested	IEP - Basic	IEP - Competent	IEP -Advanced	IEP - Advanced Percentage	IEP- Competent or above Percentage
	Auto Mechanics	40	2	0	18	20	50%	95%	46	0	2	8	36	78%	96%	18	1	6	11	61.11%	94.44%	39	0	1	3	35	90%	97%	11	1		10	90.91%
Auto Mechanics (PS)	0	0	0	0	0			0	0	0	0	0									0	0	0	0	0								
Auto Technology	20	0	0	0	20	100%	100%	19	0	0	0	19	100%	100%	2	0		2	100.00%	100.00%	18	0	1	3	14	78%	94%	5	0	2	3	60.00%	100.00%
Clinical Care Asst.	26	0	0	7	19	73%	100%	20	0	0	2	18	90%	100%	2		2	100.00%	100.00%	21	0	5	12	4	19%	76%	1		1		0.00%	100.00%	
Collision Repair	20	0	1	5	14	70%	95%	15	0	3	3	9	60%	80%	10	3	1	6	60.00%	70.00%	16	0	5	10	1	6%	69%	5	2	3		0.00%	60.00%
Collision Repair (PS)	0	0	0	0	0			0	0	0	0	0								2	0	0	2.00		0%	100%							
Cosmetology	48	5	0	8	35	73%	90%	39	0	0	9	30	77%	100%	7		1	6	85.71%	100.00%	41	0	1	9	31	76%	98%	9		1	8	88.89%	100.00%
Diesel Tech.	20			3	17	85%	100%	24			1	23	96%	100%	7		1	6	85.71%	100.00%	20		3	5	12	60%	85%	6	1	2	3	50.00%	83.33%
Diesel Tech. (PS)	0	0	0	0	0			0	0	0	0	0			5		1	4	80.00%	100.00%	1	0	0	0	1	100%	100%						
Dental Asst.	24	0	0	2	22	92%	100%	16	0	0	0	16	100%	100%	1			1	100.00%	100.00%	18	0	0	0	18	100%	100%	3			3	100.00%	100.00%
Dental Asst. (PS)	11	0	0	0	11	100%	100%	16	0	0	1	15	94%	100%	6						9	0	0	0	9	100%	100%						
Heavy Equipment	22	0	0	12	10	45%	100%	0	0	0	0	0									0	0	0	0	0								
Medical Asst. A	23	2	0	9	12	52%	91%	16	0	1	0	15	94%	94%	1			1	100.00%	100.00%	22	0	0	7	15	68%	100%	3		2	1	33.33%	100.00%
Medical Asst. B	0	0	0	0	0			0	0	0	0	0									0	0	0	0	0								
Medical Asst. (PS)	5	0	0	1	4	80%	100%	6	0	1	1	4	67%	83%							3	0	0	0	3	100%	100%						
Nursing Asst.	37	0	0	0	37	100%	100%	44	0	0	17	27	61%	100%	9		5	4	44.44%	100.00%	41	0	0	3	38	93%	100%	12		2	10	83.33%	100.00%
RV/OPE	14	0	0	2	12	86%	100%	22	0	3	6	13	59%	86%	12	3	4	5	41.67%	75.00%	21	0	1	2	18	86%	95%	8	1	2	5	62.50%	87.50%
RV/OPE (PS)																					2	0	0	0	2	100%	100%						
School Average	310	9	1	67	233	75%	97%	283	0	10	48	225		96%						274	0	17	56	201	73%	94%							
Secondary Average	294	9	1	66	218	74%	97%	261	0	9	46	206	79%	97%	80	7	19	48	60.00%	83.75%	257	0	17	54	186	72%	93%	63	5	15	43	68.25%	92.06%
Post Secondary Average	16	0	0	1	15	94%	100%	22	0	1	2	19	86%	95%							17	0	0	2	15	88%	100%						

POST SECONDARY =(PS)

SCHOOL-WIDE 2015 NOCTI RESULT AVERAGES

	Total Tested	Basic	Competent	Advanced	Advanced Percentage	Competent or above Percentage
BT Campus Average	180	7	28	145	80.56%	96.11%
Secondary	156	7	21	128	82.05%	95.51%
Post-Secondary	4	0	1	3	75.00%	100.00%
MJ Campus Average	234	12	24	198	85%	94.87%
Secondary						
Post-Secondary						
WS Campus Average	274	17	56	201	73%	94%
Secondary	257	17	54	186	72%	93%
Post-Secondary	17	0	2	15	88%	100%
School-Wide Average	688	36	108	544	79.07%	94.77%
Secondary	413	24	75	314	76.03%	94.19%
Post-Secondary	21	0	3	18	85.71%	100.00%

ENROLLMENT DATA
 PERCENT OF HIGH SCHOOL SENIORS ATTENDING LCCTC
 October 1, 2009 through October 1, 2014

2009-2010	9th	10th	11th	12th	Total HS	CTC-12	% of HS grade 12
Cocalico	287	282	311	263	1143	35	13.308%
Columbia	114	128	98	93	433	23	24.731%
Conestoga Valley	370	322	332	314	1338	57	18.153%
Donegal	236	225	228	215	904	53	24.651%
E. Lanc. Co.	290	311	244	213	1058	92	43.192%
Elizabethtown	323	349	369	325	1366	76	23.385%
Ephrata	346	337	297	294	1274	54	18.367%
Hempfield	594	605	574	592	2365	77	13.007%
Lampeter-Strasburg	284	280	263	287	1114	36	12.544%
Lancaster SD	965	869	731	601	3166	63	10.483%
Manheim Central	246	258	260	247	1011	72	29.150%
Manheim Township	445	520	433	396	1794	30	7.576%
Penn Manor	386	462	459	459	1766	104	22.658%
Pequea Valley	160	166	157	156	639	35	22.436%
Solanco	332	323	289	334	1278	63	18.862%
Warwick	422	380	363	376	1541	51	13.564%
GRAND	5800	5817	5408	5165	22190	921	17.832%
2010-2011	9th	10th	11th	12th	Total HS	CTC-12	% of HS grade 12
Cocalico	247	293	269	298	1107	61	20.470%
Columbia	130	100	106	93	429	25	26.882%
Conestoga Valley	356	344	320	320	1340	75	23.438%
Donegal	215	233	210	215	873	39	18.140%
E. Lanc. Co.	288	277	284	255	1104	78	30.588%
Elizabethtown	309	327	341	361	1338	84	23.269%
Ephrata	355	312	327	289	1283	64	22.145%
Hempfield	548	563	594	566	2271	75	13.251%
Lampeter-Strasburg	302	265	265	266	1098	39	14.662%
Lancaster SD	922	822	784	588	3116	64	10.884%
Manheim Central	259	248	264	265	1036	58	21.887%
Manheim Township	469	448	490	434	1841	33	7.604%
Penn Manor	441	406	476	441	1764	91	20.635%
Pequea Valley	150	160	158	161	629	46	28.571%
Solanco	327	320	298	306	1251	79	25.817%
Warwick	387	398	360	364	1509	42	11.538%
GRAND	5705	5516	5546	5222	21989	953	18.250%

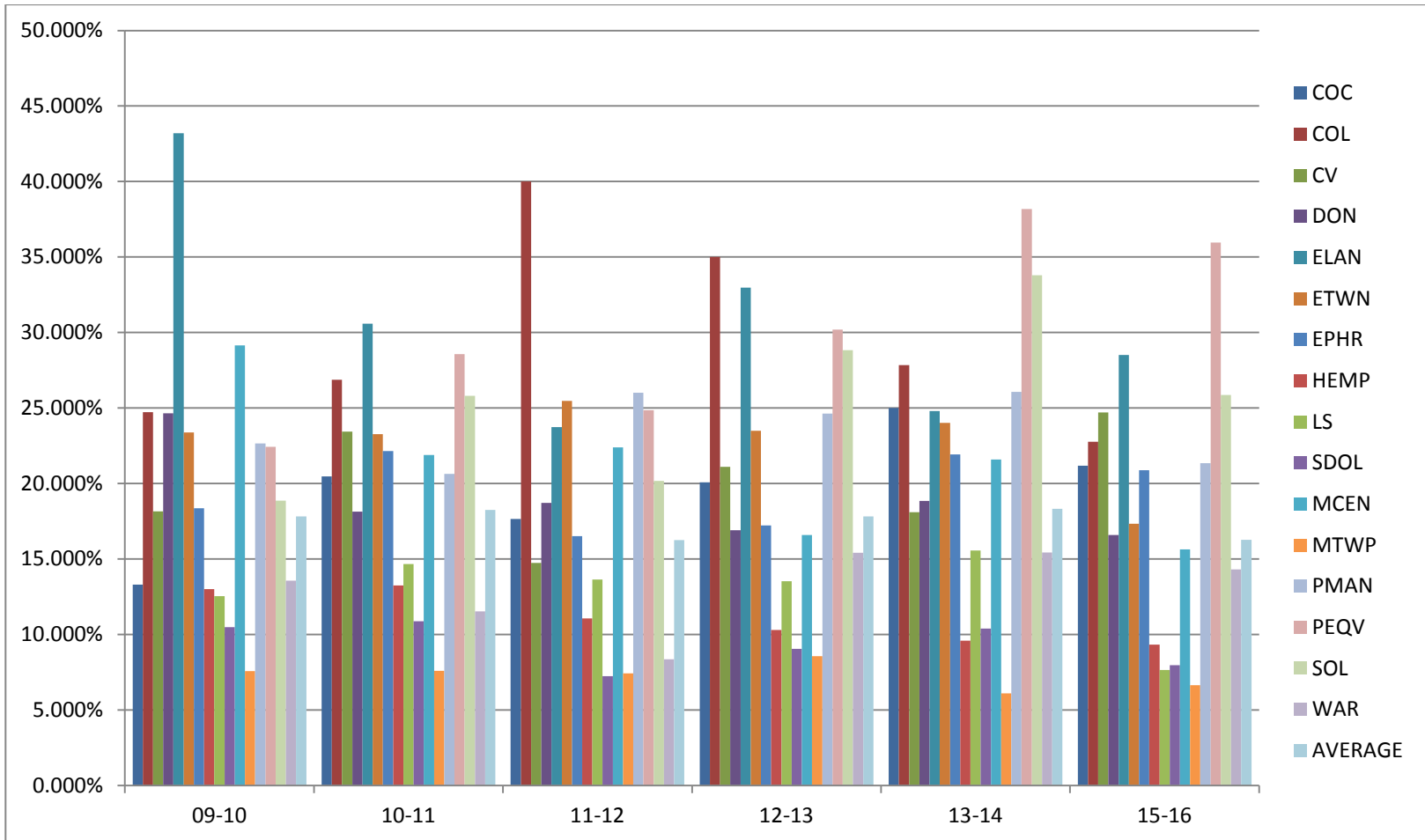
ENROLLMENT DATA
 PERCENT OF HIGH SCHOOL SENIORS ATTENDING LCCTC
 October 1, 2009 through October 1, 2014

2011-2012	9th	10th	11th	12th	Total HS	CTC-12	% of HS grade 12
Cocalico	286	239	280	272	1077	48	17.647%
Columbia	102	109	77	85	373	34	40.000%
Conestoga Valley	351	355	342	346	1394	51	14.740%
Donegal	207	206	220	219	852	41	18.721%
E. Lanc. Co.	245	273	253	299	1070	71	23.746%
Elizabethtown	295	318	323	318	1254	81	25.472%
Ephrata	313	345	319	327	1304	54	16.514%
Hempfield	544	534	562	587	2227	65	11.073%
Lampeter-Strasburg	260	290	255	242	1047	33	13.636%
Lancaster SD	867	808	713	593	2981	43	7.251%
Manheim Central	256	260	240	259	1015	58	22.394%
Manheim Township	449	495	427	471	1842	35	7.431%
Penn Manor	440	440	418	446	1744	116	26.009%
Pequea Valley	157	153	159	169	638	42	24.852%
Solanco	345	284	272	233	1134	47	20.172%
Warwick	390	375	373	359	1497	30	8.357%
GRAND	5507	5484	5233	5225	21449	849	16.249%
2012-2013	9th	10th	11th	12th	Total HS	CTC-12	% of HS grade 12
Cocalico	283	292	238	264	1077	53	20.076%
Columbia	83	89	104	60	336	21	35.000%
Conestoga Valley	342	344	343	341	1370	72	21.114%
Donegal	236	204	200	213	853	36	16.901%
E. Lanc. Co.	273	240	252	273	1038	90	32.967%
Elizabethtown	304	309	281	315	1209	74	23.492%
Ephrata	327	301	346	302	1276	52	17.219%
Hempfield	585	516	534	582	2217	60	10.309%
Lampeter-Strasburg	273	250	274	266	1063	36	13.534%
Lancaster SD	874	822	734	619	3049	56	9.047%
Manheim Central	245	254	259	235	993	39	16.596%
Manheim Township	497	454	472	420	1843	36	8.571%
Penn Manor	426	440	459	406	1731	100	24.631%
Pequea Valley	154	150	147	159	610	48	30.189%
Solanco	315	320	267	274	1176	79	28.832%
Warwick	362	390	362	389	1503	60	15.424%
GRAND	5579	5375	5272	5118	21344	912	17.819%

ENROLLMENT DATA
 PERCENT OF HIGH SCHOOL SENIORS ATTENDING LCCTC
 October 1, 2009 through October 1, 2014

2013-2014	9th	10th	11th	12th	Total HS	CTC-12	% of HS grade 12
Cocalico	254	284	275	224	1037	56	25.000%
Columbia	92	74	76	97	339	27	27.835%
Conestoga Valley	364	338	329	359	1390	65	18.106%
Donegal	235	241	203	191	870	36	18.848%
E. Lanc. Co.	302	253	232	262	1049	65	24.809%
Elizabethtown	328	312	281	279	1200	67	24.014%
Ephrata	321	336	303	342	1302	75	21.930%
Hempfield	599	570	517	532	2218	51	9.586%
Lampeter-Strasburg	255	270	249	302	1076	47	15.563%
Lancaster SD	894	774	722	567	2957	59	10.406%
Manheim Central	245	258	253	264	1020	57	21.591%
Manheim Township	490	562	581	557	2190	34	6.104%
Penn Manor	467	431	444	441	1783	115	26.077%
Pequea Valley	136	148	145	110	539	42	38.182%
Solanco	329	298	325	284	1236	96	33.803%
Warwick	346	361	381	363	1451	56	15.427%
GRAND	5657	5510	5316	5174	21657	948	18.322%
2014-2015	9th	10th	11th	12th	Total HS	CTC-12	% of HS grade 12
Cocalico	279	255	282	269	1085	57	21.190%
Columbia	136	100	90	101	427	23	22.772%
Conestoga Valley	345	371	324	336	1376	83	24.702%
Donegal	253	246	238	205	942	34	16.585%
E. Lanc. Co.	310	281	262	228	1081	65	28.509%
Elizabethtown	359	322	310	294	1285	51	17.347%
Ephrata	328	323	332	292	1275	61	20.890%
Hempfield	606	616	642	621	2485	58	9.340%
Lampeter-Strasburg	284	244	264	261	1053	20	7.663%
Lancaster SD	943	867	763	602	3175	48	7.973%
Manheim Central	258	268	255	275	1056	43	15.636%
Manheim Township	491	470	481	421	1863	28	6.651%
Penn Manor	438	477	454	445	1814	95	21.348%
Pequea Valley	143	141	146	114	544	41	35.965%
Solanco	356	309	274	286	1225	74	25.874%
Warwick	376	345	359	384	1464	55	14.323%
GRAND	5905	5635	5476	5134	22150	836	16.284%

ENROLLMENT DATA
Percent of High School Seniors Attending LCCTC
2009-10 to 2015-16



Lancaster County Career Technology Center
Occupational Status of Graduates
2014-2015 Composite

Program	Total Graduates	Graduates employed in field	Employed in related field	Employed in unrelated field	Military Service	Post-Secondary Education	May 2015 Survey POSITIVE PLACEMENT
Animal Production Science & Technology	9	3	0	2	0	3	89%
Architectural CAD/Design	11	0	0	3	0	4	64%
Automotive Mechanics	41	5	0	18	1	12	88%
Automotive Technology	18	5	3	1	1	6	89%
Baking & Pastry Arts	18	1	1	2	0	12	89%
Cabinetmaking & Wood Technology	19	6	0	3	1	4	74%
Clinical Care Assistant	21	0	0	1	0	19	95%
Collision Repair	18	5	0	5	2	1	72%
Commercial Art	21	0	0	3	0	17	95%
Commercial Construction/Management	12	2	1	1	0	4	67%
Computer Systems Technology	20	0	0	5	0	8	65%
Cosmetology MJ + WS	63	1	1	40	0	11	84%
Culinary Arts/Chef	44	8	3	6	0	20	84%
Dental Assistant	18	0	0	12	0	3	83%
Diesel Equipment Technology	20	12	1	1	2	1	85%
Digital Design/Print Media	16	0	3	5	1	5	88%
Early Childhood Education	39	2	0	13	0	23	97%
Electrical Construction Technology	17	1	1	1	2	10	88%
Electro-Mechanical Engineering Technology	10	2	0	0	0	8	100%
Event Planning & Tourism Services Management	10	0	3	1	0	6	100%
Heavy Equipment Operation & Basic Maintenance	18	5	6	5	0	2	100%
HVAC/R	17	6	0	2	1	4	76%
Medical Administrative Assistant	14	1	1	5	0	4	79%
Medical Assistant	22	0	0	6	2	9	77%
Nursing Assistant/Home Health Aide	41	6	1	8	0	18	80%
Painting / Ceramic Tile & Vinyl	16	6	1	6	0	0	81%
Photography & Digital Imaging	20	0	0	3	1	13	85%
Plumbing	19	12	3	2	1	1	100%
Protective Services Academy	51	2	1	11	16	18	94%
Residential Carpentry	19	5	0	3	2	6	84%
RV & Outdoor Power Equipment	22	3	0	5	3	5	73%
Sheet Metal Technology	15	6	0	2	1	6	100%
Veterinary Assistant	44	3	2	14	1	17	84%
Welding Technology	22	15	0	0	1	3	86%
Introduction to Health Careers	34	0	0	0	0	34	100%
Grand Total	819	123	32	195	39	317	86%

Mark Your Calendar

2015-16 JOC MEETING SCHEDULE

Day	Date	Time	Location
Thursday	January 22, 2015	7:00 PM	Willow Street
Thursday	February 26, 2015	7:00 PM	Mount Joy
Thursday	March 26, 2015	7:00 PM	Brownstown
Thursday	April 23, 2015	7:00 PM	Willow Street
Thursday	May 28, 2015	7:00 PM	Mount Joy
Thursday	June 25, 2015	7:00 PM	Brownstown
	NO MEETING JULY		
Thursday	August 27, 2015	7:00 PM	Willow Street
Thursday	September 24, 2015	7:00 PM	Mount Joy
Thursday	October 22, 2015	7:00 PM	Brownstown
	NO MEETING NOV.		
Monday	December 14, 2015	7:00 PM	Willow Street

ADA/EOE/Nondiscrimination Information:

The Lancaster County Career & Technology Center does not discriminate on the basis of race, color, national origin, sex, disability or age in its programs or activities. This policy of nondiscrimination extends to all other legally protected classifications under state and federal laws.

For information regarding the American with Disabilities Act (ADA), the rights of an individual with a disability, our obligations under ADA, or grievance procedures, contact the Business Manager and ADA Coordinator, 1730 Hans Herr Drive, PO Box 527, Willow Street, PA 17584-0527. Telephone: (717) 464-7060.

For inquiries regarding other nondiscriminatory policies, programs or for information regarding services, activities, programs and facilities that are accessible to and usable by both disabled persons and national origin minority persons who lack English language skills, contact the Supervisor of Student Services and Coordinator for Title VI, IX and Section 504, 1730 Hans Herr Drive, PO Box 527, Willow Street, PA 17584-0527. Telephone: (717) 208-3124.

Lancaster County CTC is accredited by: The commission of the Council on Occupational Education, 7840 Roswell Road, Building 300, Suite 325, Atlanta, GA 30350. Telephone: (800) 917-2081. Website: www.council.org.

For program descriptions, lengths, schedules, school calendar and grading procedures; admissions and transfer requirements; tuition, fees and refunds policy; financial aid information; prerequisite and completion information; graduation rates; rules and regulations for conduct; grievance procedures; legal requirements for licensure (if applicable); requirements for entry into or advancement within an occupation; median debt of students who completed the program; and other important information, please visit our website at www.lancasterctc.edu.

A complete listing of full-time or part-time faculty members, including degrees held and the conferring institution is available for review upon written request in the Executive Director's office at the Main Campus of the Lancaster County CTC.